

BSA Meeting: October 5th, 2020

Welcome & Updates

- Membership Details & Club Contacts
- Intro to the Website
- Cans Around the Oval
- Ice Breaker Activity

Class Registration

- Learn more about the classes you will take in the BMS major
- Discover electives that are offered through BMS and other programs at Colorado State

Coming Soon to BSA

- Graduate & Professional School Panel
- Halloween Trivia
- Self-Guided Resume Workshop
- Science & Research During COVID-19 Panel

Welcome to the Biomedical Student Association!

- Membership is free!
 - Rewards System
- Officer Team
 - **Hailey Bradley** (President)
 - **Wyatt Deaderick** (Vice President)
 - **Abby Sorapuru** (Treasurer)
 - **Reed Koldenhoven** (Secretary)
 - **Lydia Huesgen** (Public Relations)
 - **Luke Bennett** (Advertising)
 - **Emily Wrede** (Social Chair)
 - **Emily Miner** (Community Service Coordinator)
 - **Jacob Djourup** (CVMBS College Council Rep.)
 - **Lauren Billow** (CVMBS College Council Rep.)
 - **Sarah Maddox** (Advisor)

Our mission as a student-run club at Colorado State University is to focus on pursuing careers in the health care field, research, and more!



POWERED BY **weebly**

<https://bsacsu.weebly.com/>



\$15,021 / \$34,000

44%

OF GOAL

177

SUPPORTERS

[DONATE NOW](#)



34th Annual Food and Fund Drive

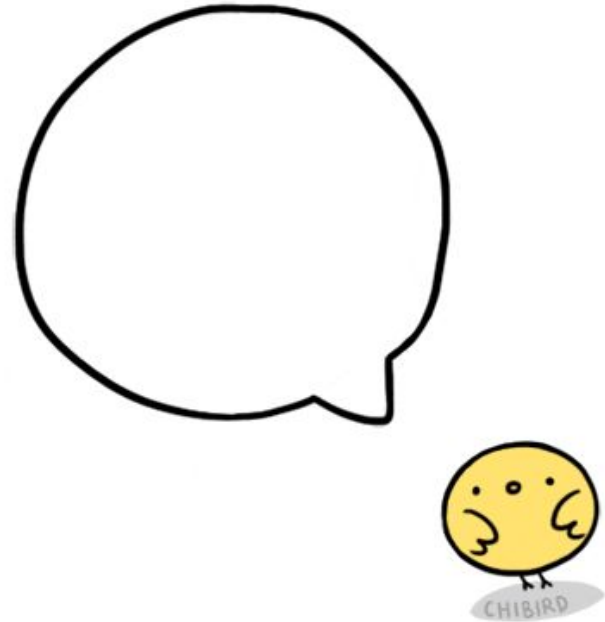


<https://my.foodbanklarimer.org/campaign/c-a-n-s-around-the-oval-2020/c299038>

Ice Breaker Activity:

In your small breakout rooms, please discuss the following:

- **Name, Major** (Not everyone in BSA is in BMS), **Year at CSU**
- **GIF that you can relate to today** (You can share it in the chat!)
- **Your self-care routine during these strange times**



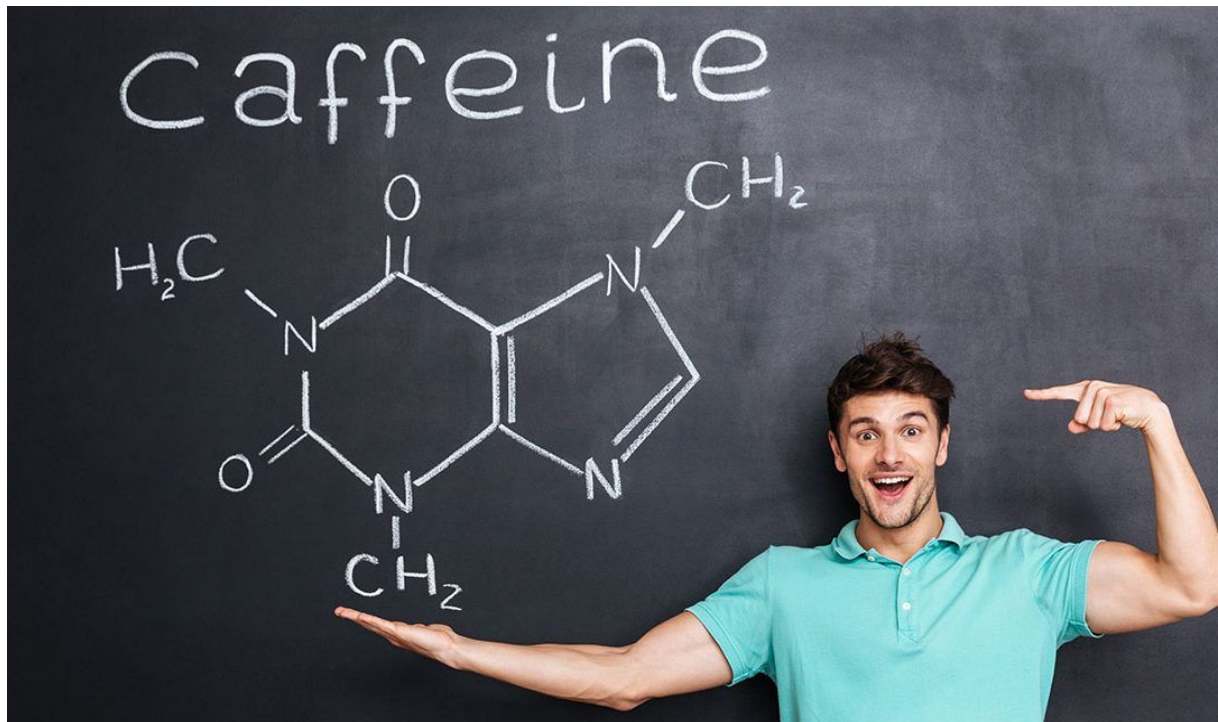
Biomedical Sciences Required Courses

Courses needed to graduate!



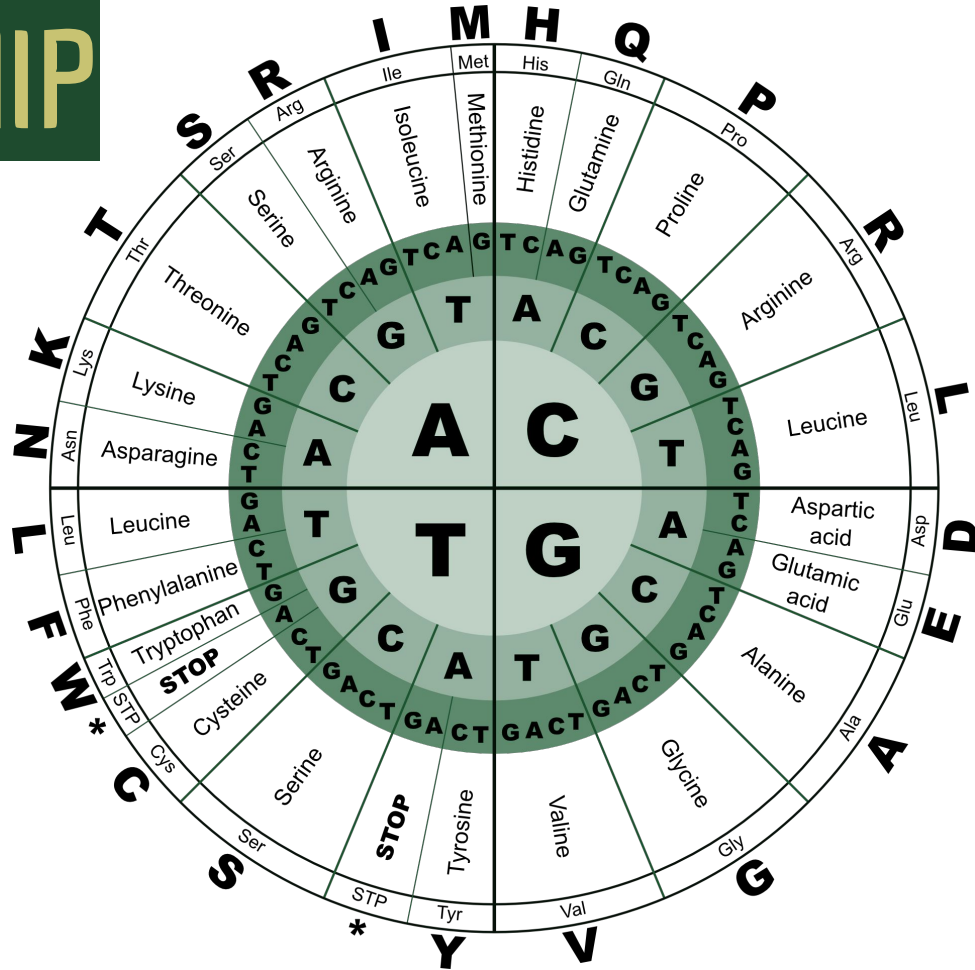
CHEM & BC

- CHEM 111 and CHEM 112
- CHEM 113 and CHEM 114
- CHEM 245/246 OR CHEM 341, and CHEM 343/344
- BC 351



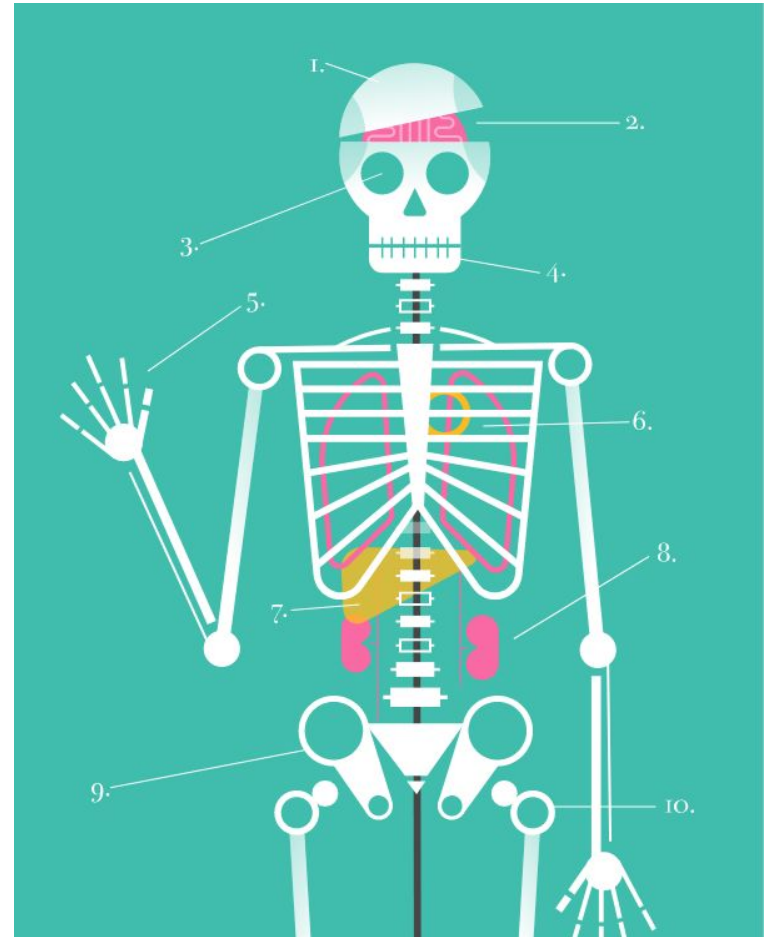
LIFE, BZ, SOCR, & MIP

- LIFE 102
- LIFE 210
- LIFE 212
- Genetics
 - LIFE 201B
 - BZ 350
 - SOCR 330
- MIP 300
- MIP 302



BMS Courses

- BMS 260
- BMS 302
- BMS 360
- BMS 301, BMS 305, or BMS 330
- Capstones
 - BMS 345/400
 - BMS 420/421
 - BMS 460/461



Electives

These are opportunities found both inside and outside of the Biomedical Sciences Program!



“Electives help students discover themselves and the world around them.”

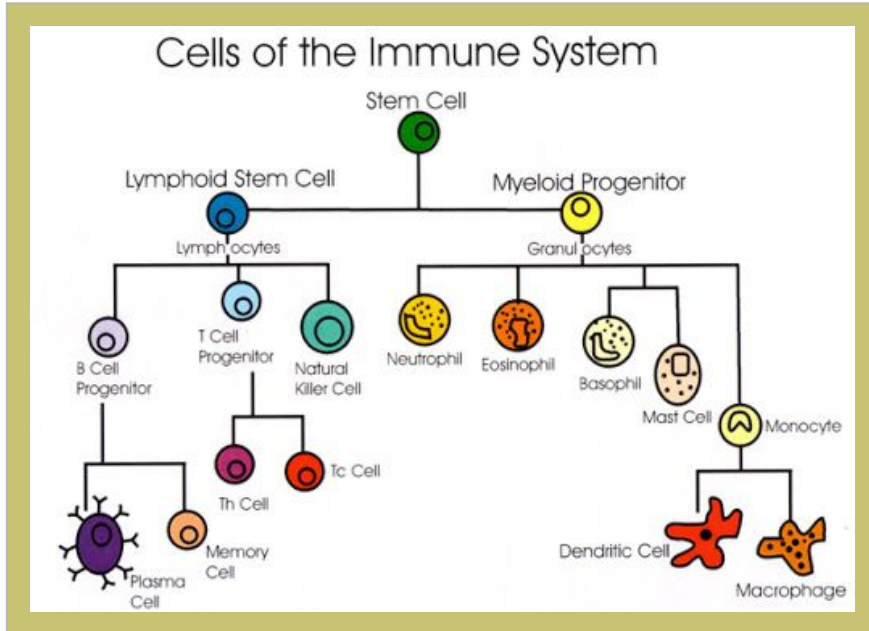
BMS & BC Electives in Biomedical Sciences

- BMS 325
- BMS 384
- BMS 401
- BMS 405
- BMS 409
- BMS 425
- BMS 430

- BMS 450
- BMS 487, 495, or 498
- BMS 500
- BMS 501
- BMS 521
- BMS 531 or 575
- BC 463
- BC 465

MIP Electives in Biomedical Sciences

- **MIP 342** (4 credits)



- **MIP 351** (3 credits)



Non-BMS Related Electives

- PSY 100
- PSY 320
- SOC 100
- SOC 105
- Honors and Key
Community Specific
Classes



President's Leadership Program

- A Call to Lead (4 Credits)
- Leadership Styles (4 Credits)
- Effective Leadership (6 Credits)



Certificate in Spanish for Animal Health Care

A person wearing blue scrubs, a cap, and gloves is standing in a large outdoor facility filled with rows of white, arched cages. Each cage contains a black and white spotted calf. The person is holding a bucket and appears to be tending to the animals. The background shows more cages and some industrial structures under a clear blue sky.

The certificate will help future veterinarians, current business owners and more learn Spanish relevant to animal health care.

Overview of Upcoming Meetings/Events



October 19th

Graduate & Professional
School Panel



October Event

Halloween Trivia Night with
Other Clubs



November 2nd

Self-Guided Resume
Workshop



November 16th

Science & Research During
COVID-19 Panel